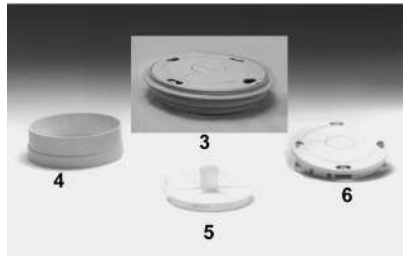


# ADMIRAL™ S15 AND S20 SKIMMERS

## ADMIRAL SKIMMERS FOR POOLS AND SPAS



Admiral Skimmers



Admiral Skimmer Accessories

Admiral S15 Skimmers offer a variety of bases and throats for a wide variety of plumbing and construction requirements, configurations and materials. These skimmers have an innovative lock-down lid that can be personalized with custom logo disks. S15 Skimmers are injection molded of high strength ABS and are available with a flap weir for superior skimming action.

Admiral S20 Skimmers have a PVC reinforced twin port base. S20 may be purchased with equalizer for commercial and NSF applications or for when the second port is connected to the main drain. All models include the innovative lock down lid that can be personalized with custom logo disks and are available with a flap weir or the exclusive circular weir for superior skimming action.

### Featured Highlights

- Admiral 15 Skimmers: High strength ABS body
- Admiral S20 Skimmers: Reinforced PVC base
- Slip FIPT, 1-1/2 inch or 2 inch
- Variety of throat lengths
- Easy to install
- Innovative lock down lid
- 1-1/2 inch and 2 inch ports
- Lid extension collars
- Flap weir or the exclusive circular weir
- Custom logo disk available

### Ordering Information

Product	Description	Carton Qty.	Carton Wt. (Lbs.)
<b>S15 SKIMMERS FOR CONCRETE CONSTRUCTION</b>			
84120100	S15, circ. weir, 1-1/2 in., threaded	1	10
84120200	S15, circ. weir, 2 in., threaded	1	10
84900300	S15, flap weir, 1-1/2 in., threaded	1	10
<b>S15 SKIMMERS FOR VINYL CONSTRUCTION</b>			
84151500	S15, OM circ. weir, 1-1/2 in., threaded short throat	1	10
84141100	S15, circ. weir, 1-1/2 in., threaded short throat	1	10
<b>S20 SKIMMERS FOR CONCRETE CONSTRUCTION</b>			
84420405	S20, flap weir, no equalizer, 1-1/2 in. slip	1	10
84420500	S20, circ. weir, equalizer, 2 in. threaded, FIPT <sup>1</sup>	1	12
84420505	S20, circ. weir, equalizer, 2 in. slip <sup>1</sup>	1	12
84420530	S20, circ. weir, equalizer, 2 in. threaded, tan <sup>1</sup>	1	12
84420535	S20, circ. weir, equalizer, 2 in. slip, tan <sup>1</sup>	1	12
84420730	S20, circ. weir, 2 in. threaded, tan	1	10
84420735	S20, circ. weir, 2 in. slip, tan	1	10
84420600	S20, flap weir, equalizer, 2 in. threaded, FIPT <sup>1</sup>	1	12
84420605	S20, flap weir, equalizer, 2 in. slip <sup>1</sup>	1	12
84420630	S20, flap weir, equalizer, 2 in. threaded, tan <sup>1</sup>	1	12
84420635	S20, flap weir, equalizer, 2 in. slip, tan <sup>1</sup>	1	12
84420700	S20, circ. weir, no equalizer, 2 in. threaded, FIPT	1	10
84420705	S20, circ. weir, no equalizer, 2 in. slip	1	10
84420800	S20, flap weir, no equalizer, 2 in. threaded, FIPT	1	10
84420805	S20, flap weir, no equalizer, 2 in. slip	1	10
84420730	S20, circ. weir, 2 in. threaded, tan	1	10
84420735	S20, circ. weir, 2 in. slip, tan	1	10
<b>S20 SKIMMERS FOR VINYL LINER POOLS</b>			
84452200	S20S flap weir, equalizer, XLG std. 1-1/2 in. threaded, short throat 8-3/4 in. <sup>1</sup>	1	10
84472400	S20L flap weir, XLG std. 1-1/2 in. threaded, long throat 13 in.	1	10
<b>S20 SKIMMERS FOR FIBERGLASS POOLS</b>			
500023	S20, "WEDGE" flap weir, equalizer, 2 in. slip <sup>1</sup>	1	10

<sup>1</sup> NSF listed for commercial installation. Check valve 506162 must be purchased separately.

# ADMIRAL™ S15 & S20 SKIMMERS (CONT'D)

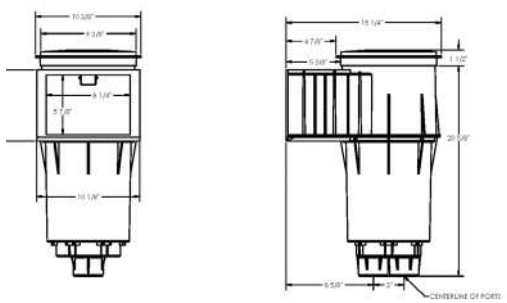
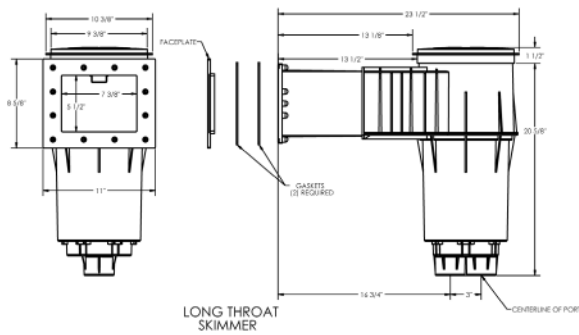
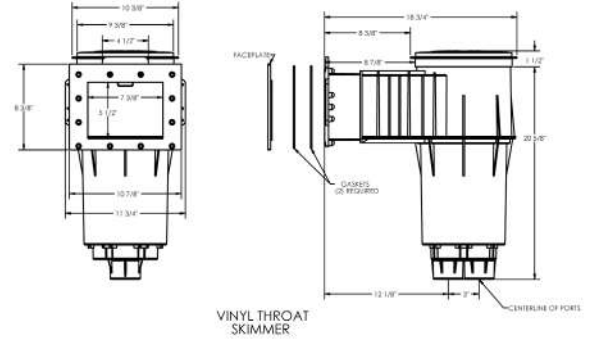
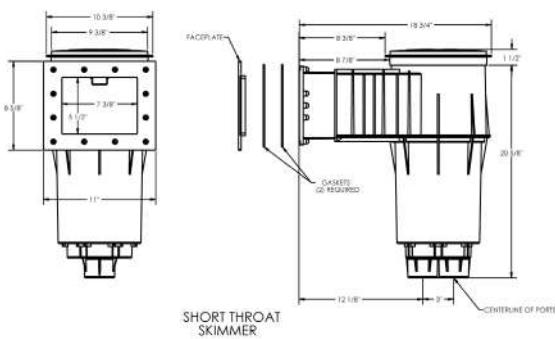
506162	Equalizer check valve	1	0.25
85018000	Lid with ring seat, S15 & S20, 9 in. beige	1	1
85002300	Extension collar for ring seat, adjustable to 3 in.	1	0.50
85001900	Vacuum plate adapter, S15 & S20	1	0.50
85007400	Lock down lid for existing Admiral skimmers, white	1	0.50
85007411	Lock down lid for existing Admiral skimmers, black	1	0.50
85007413	Lock down lid for existing Admiral skimmers, grey	1	0.50
85007430	Lock down lid for existing Admiral skimmers, tan	1	0.50
85000400	Lid/collar set, white	1	0.50
85000411	Lid/collar set, black	1	0.50

## Dimensions and Performance



Certified to NSF/ANSI Standard 50

### ADMIRAL S20 SKIMMER PROFILE



We can customize Admiral Skimmer Deck Lids with your professionally supplied artwork. Based on a minimum quantity of 500 lids there is a one-time \$500.00 set up charge for a single design. Subsequent changes are subject to additional fees. Contact your Pentair Aquatic Systems Representative for more information.

See pages 608 for replacement parts.